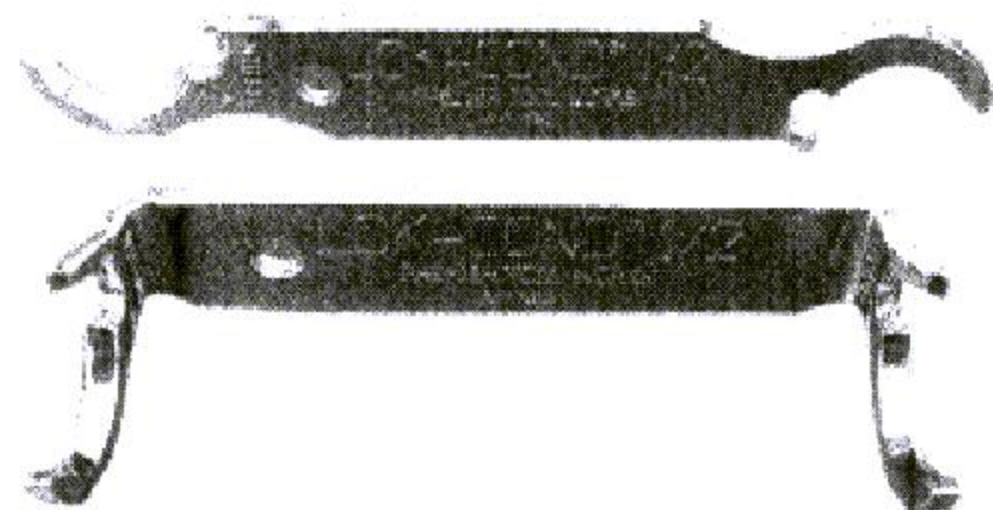


PREMIER TOOL WORKS

LOK-COND™ Conduit fitting locknut wrenches and sockets

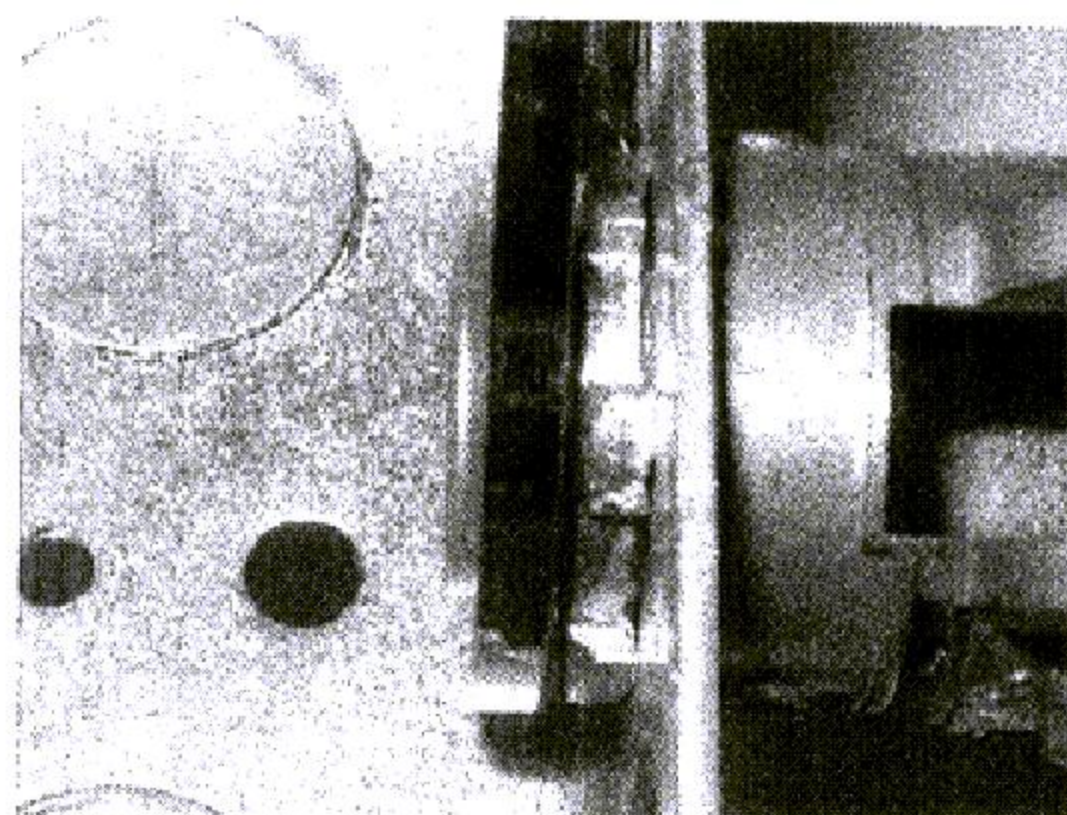
HOW TO GET BEST USE OF THE LOK-COND™ WRENCHES

Congratulations on your purchase of a unique time saving tool. The LOK-COND™ wrench has been engineered to reduce frustration and is designed with the latest CAD (computer aided design) software to create a new operating geometry. The LOK-COND™ wrench uses a completely novel, and patented approach to engage the fastener. The radius projection or arc at each end of the wrench is designed to nest in the thread of the conduit fitting, next or adjacent to the locknut, *but not on it!* The drive tab needs to fit into the groove or notch of the locknut to transfer torque. The wrench can now be used to loosen or lock a fastener by rotating the wrench in the direction of the arrows marked on both end of the wrenches. The wrenches are made of the high strength alloy tool steel, are hardened for wear and nickel-chrome plated for professional use. Check out our web site www.conduit-fitting-tools.com if you would like more information.

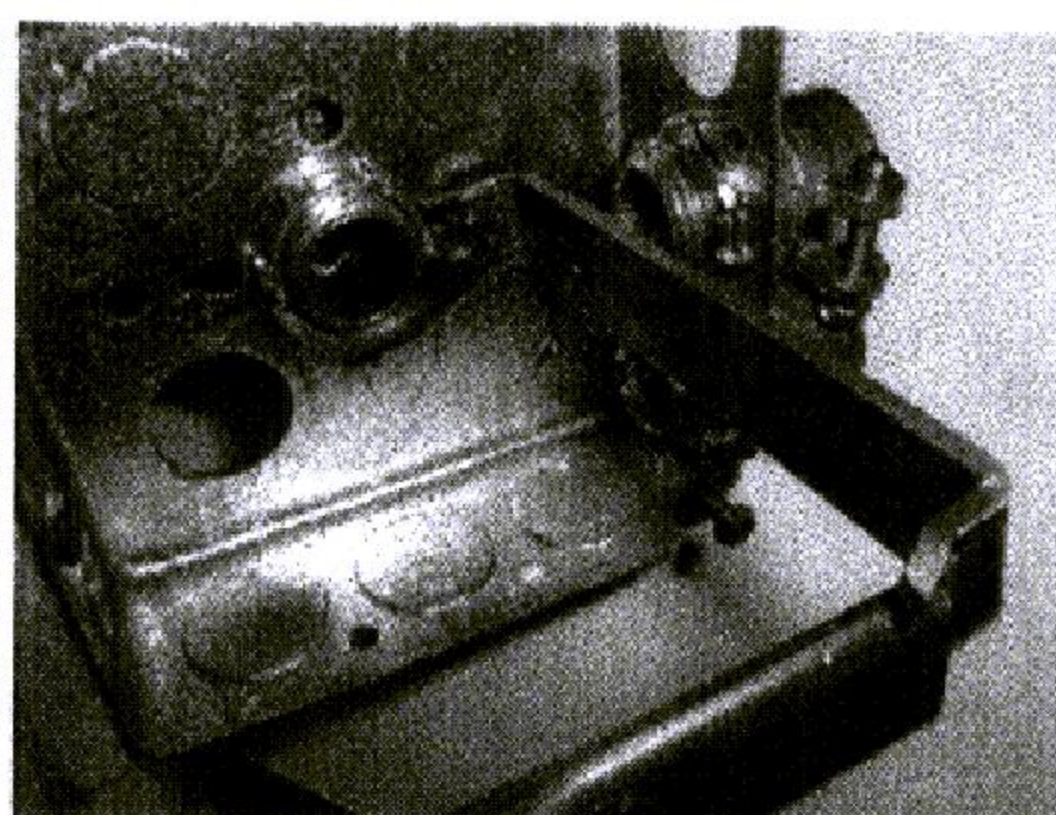


ALWAYS TURN ELECTRICAL POWER OFF BEFORE USE!

Tightening



Straight Wrench Engaged-tighten

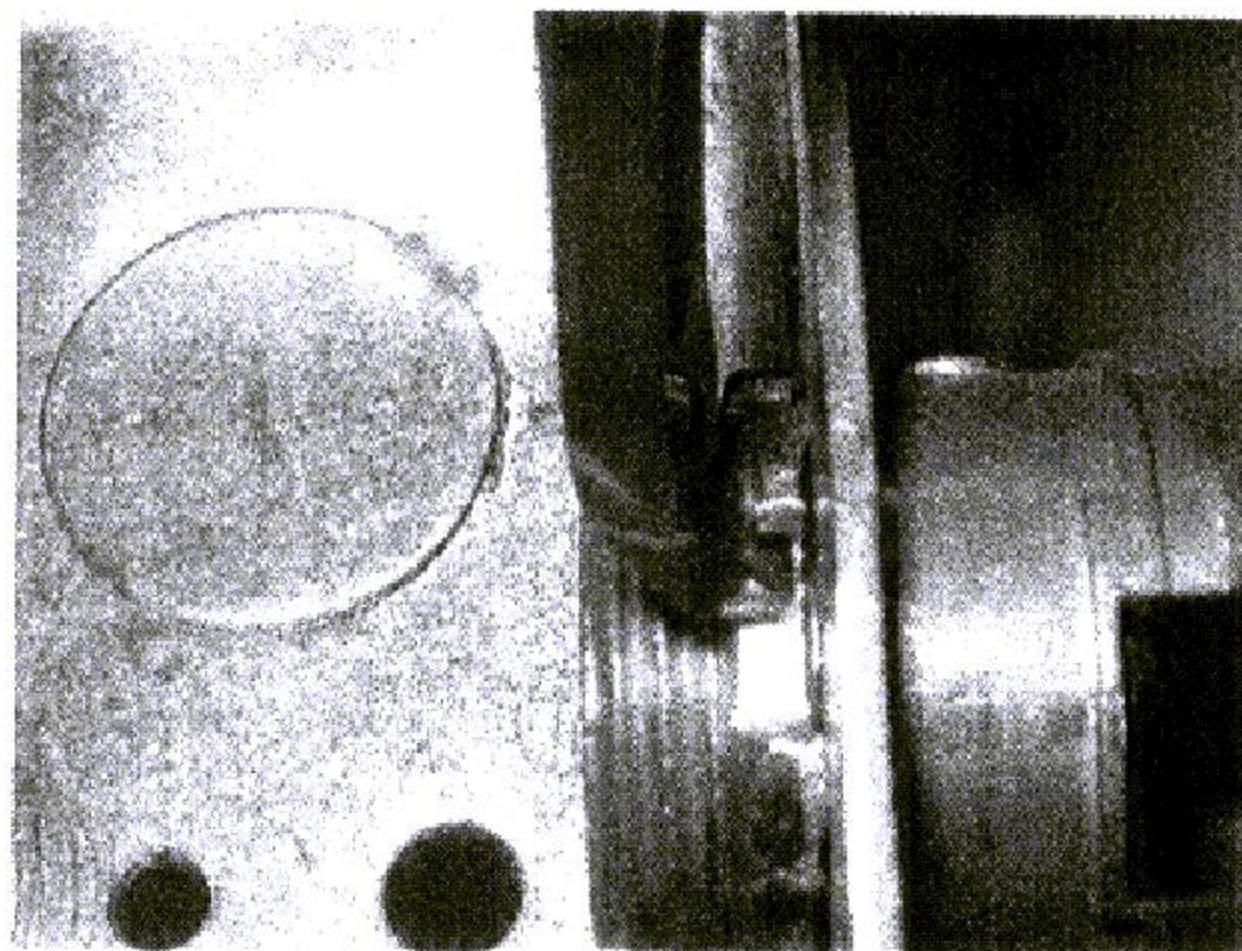


90Deg Wrench & handle Engaged-tighten

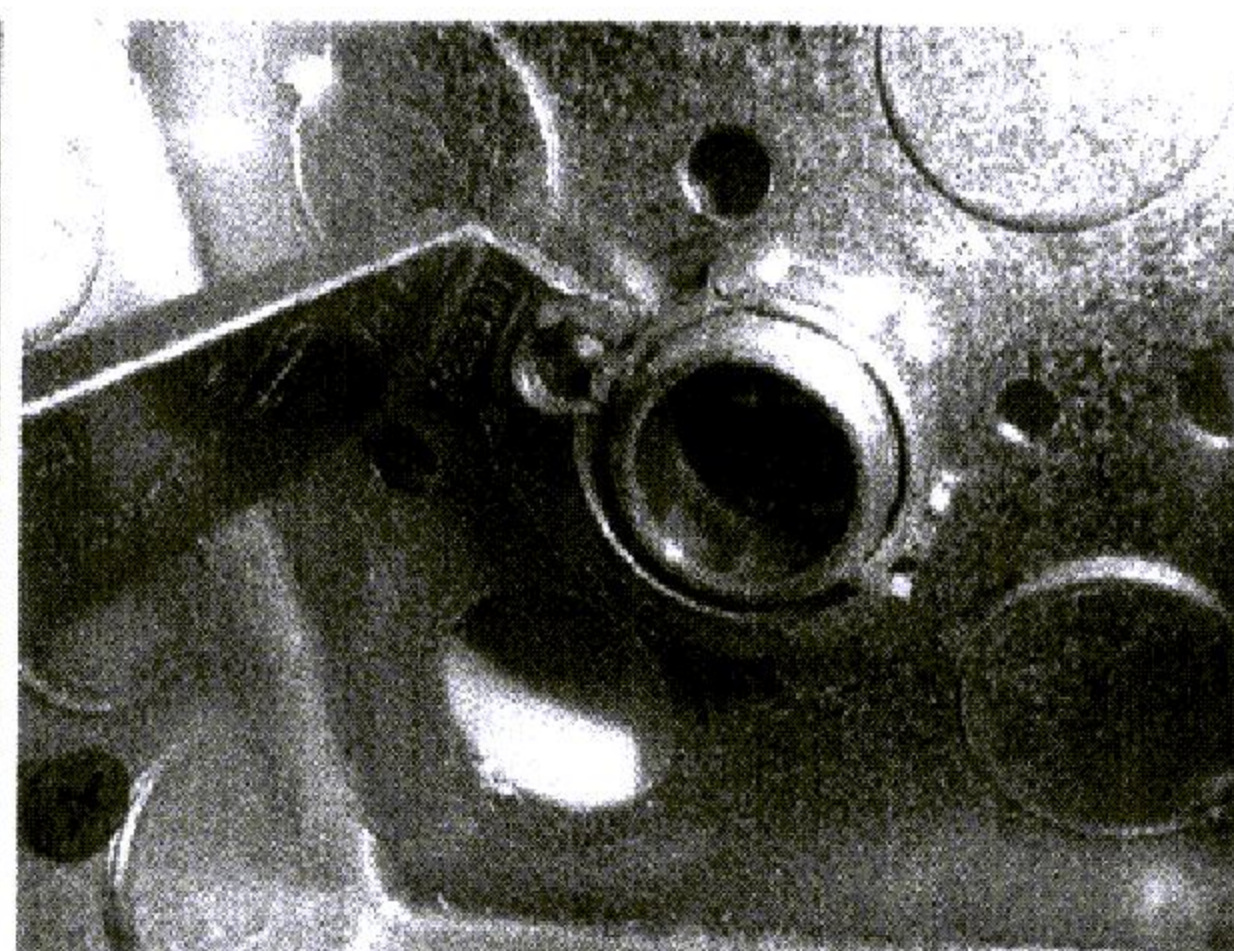
1. Slide the wrench end marked "Tighten" over and into the threads of the fitting, *not over the locknut!*
2. Engage the angled tab between the peaks of the locknut and move the wrench downward to secure the locknut. (see pictures above)
3. Tighten to desired torque, being careful not to over tighten or break the fitting.
(The supplied handle slides over the unused curved end of the 90deg wrench to provide the leverage required to tighten or loosen the locknut, see above picture on right)

NOTE: Do not use the extension with the straight wrench, as it was not designed or intended for this purpose!

Loosening



Straight Wrench engaged-loosen



90deg Wrench engaged-loosen

1. Slide the wrench end marked "Loosen" over and into the threads of the fitting, *not over the locknut!*
2. Engage the angled tab between the peaks of the locknut and move the wrench upward to loosen the locknut. (see pictures above)
3. Remove wrench and locknut when loosened.

DIVISION OF INTEGRAL AUTOMATION, Inc.

171 Shore Court Burr Ridge, Illinois 60527 • 630-654-4300 • FAX 630-654-8519 • www.conduit-fitting-tools.com