

Holocater

COMPETITIVE CONCEPTS, INC.
P.O. BOX 50
LAKEHURST, N.J. 08733

DEAR CRAFTSMAN,

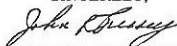
CONGRATULATIONS! THE "HOLOCATER" YOU HAVE JUST PURCHASED MAY TURN OUT TO BE ONE OF THE MOST VALUABLE TOOLS THAT YOU OWN. PLEASE FOLLOW THE ENCLOSED (STEP BY STEP) INSTRUCTIONS CAREFULLY AND YOU WILL SOON REALIZE ITS EASE OF USE. ONCE YOU HAVE LEARNED HOW TO USE YOUR "HOLOCATER" TEMPLATE, YOU WILL SOON FIND IT NOT ONLY CONVENIENT, BUT WITH MANY APPLICATIONS EXCEEDING OUR EXAMPLE IN THESE INSTRUCTIONS. AMONG ITS MANY USES, ONE MAY FIND AN EASY TO CARRY SQUARE OR RULER. YOUR TEMPLATE, WHILE SMALL IN SIZE, CAN HANDLE LAYOUT PROJECTS FROM THE SMALLEST TO THE LARGEST. THE CENTERS OF CONDUIT KO'S RANGING FROM 1/2" THROUGH 4" CAN BE LOCATED WITH EASE AND ACCURACY. YOUR TEMPLATE CAN BE USED FOR THE LAYING OUT OF CONDUIT ENTRANCES IN PANELS, PANELBOARDS, JUNCTION BOXES, ETC., AS WELL AS, PENETRATIONS THROUGH FLOORS, WALLS, AND CEILINGS.

ONE NEED ONLY TO HAVE STRUGGLED WITH LAYING OUT THE CENTERS OF CONDUIT OR PIPE PENETRATIONS, WHERE RACKS OF VARIOUS SIZES ARE INVOLVED, TO FULLY APPRECIATE HAVING THIS VALUABLE TOOL.

A MECHANIC MAY HAVE THE OPTION TO BEGIN THE LAYOUT FROM RIGHT TO LEFT OR FROM LEFT TO RIGHT DEPENDING ON FIELD CONDITIONS OR CONVENIENCE, SIMPLY BY CHOOSING THE APPROPRIATE FACE OF THE TEMPLATE. (SIDE "A") FOR LEFT TO RIGHT LAYOUT AND (SIDE "B") FOR RIGHT TO LEFT LAYOUT.

I TRUST THAT YOU WILL HAVE MANY YEARS OF SUCCESSFUL INSTALLATIONS USING THIS DEVICE FROM COMPETITIVE CONCEPTS.

SINCERELY,



JOHN R. PRESSEY
PRESIDENT

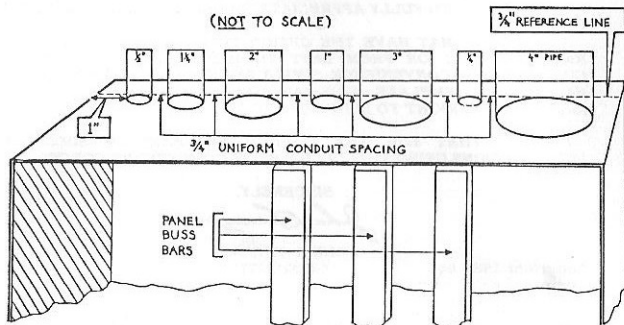
Copyright 1988 by
Competitive Concepts, Inc.
All Rights Reserved

Holocater

FOR THE PURPOSES OF THIS ILLUSTRATION, WE HAVE CHOSEN THE FOLLOWING INSTALLATION IN A DISTRIBUTION PANEL:

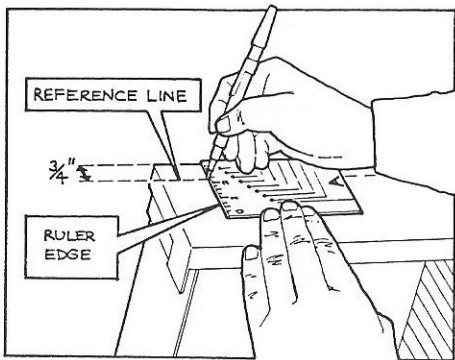
- A) LEFT TO RIGHT LAYOUT.
- B) A $\frac{1}{2}$ " CONDUIT STARTING 1" FROM LEFT SIDE OF PANEL.
- C) A REFERENCE LINE AT $\frac{3}{4}$ " FROM THE BACK SIDE OF PANEL.
- D) A SPACING BETWEEN CONDUITS OF $\frac{3}{4}$ ".

NOTE: (A) THROUGH (D) ABOVE WILL BE GOVERNED BY FIELD CONDITIONS. YOU WILL SOON LEARN HOW EASILY THE "HOLOCATER" WILL ACCOMMODATE ANY OF THESE CONDITIONS.



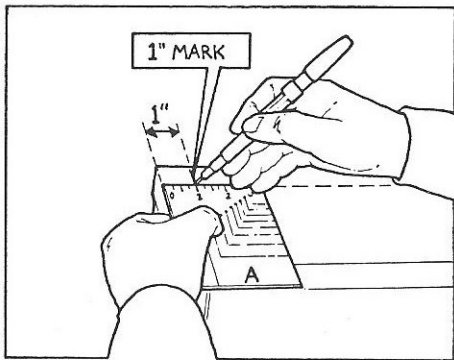
STEP ONE:

WITH THE RULER EDGE OF YOUR TEMPLATE, DRAW A LINE THE ENTIRE WIDTH OF THE PANEL AT $\frac{3}{4}$ " FROM THE REAR OF THE PANEL. THIS LINE WILL BE THE REAR WALL OF ALL THE CONDUITS TO BE INSTALLED. WE WILL CALL THIS LINE A REFERENCE LINE.



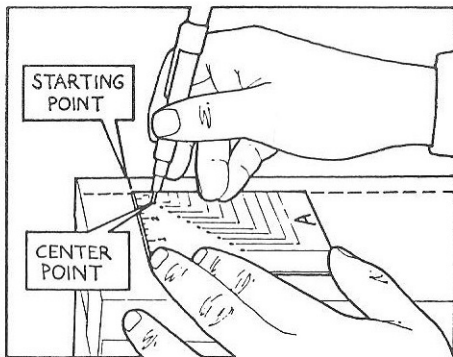
STEP TWO:

CHOOSE THE PROPER FACE OF THE TEMPLATE FOR LEFT TO RIGHT LAY OUT (SIDE "A"). USING THE RULER EDGE OF YOUR TEMPLATE, MAKE A MARK 1" FROM THE LEFT HAND SIDE OF THE PANEL.



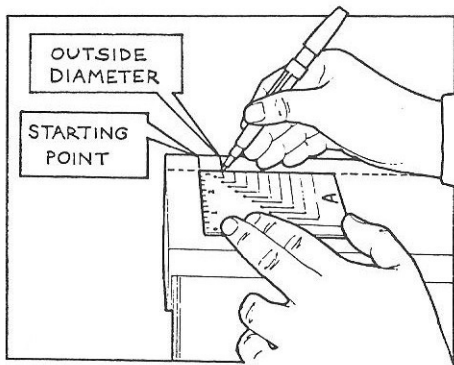
STEP THREE:

WITH "OUTSIDE DIAMETER MARKINGS" EDGE OF TEMPLATE FACING THE REFERENCE LINE, ALIGN LEFT (RULER) EDGE OF TEMPLATE AT 1" MARK MADE IN STEP 2. FOLLOW $\frac{1}{2}$ " KO AND PLACE A MARK ON PANEL THROUGH THIS HOLE. THIS MARK IS THE CENTER OF A $\frac{1}{2}$ " KO AND THE POINT WHERE YOU WILL DRILL FOR INSTALLATION OF YOUR FIRST CONDUIT.



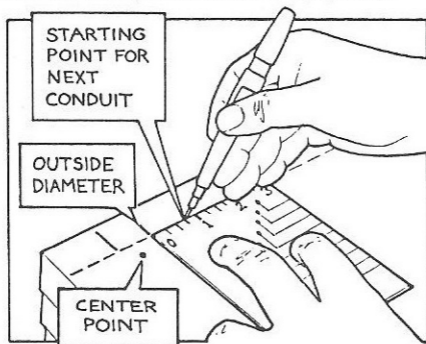
STEP FOUR:

WITHOUT MOVING THE TEMPLATE MAKE A MARK ON THE REFERENCE LINE AT THE $\frac{1}{2}$ " OUTSIDE DIAMETER LINE OF THE TEMPLATE.



STEP FIVE:

FOR $\frac{3}{4}$ " CONDUIT SPACING, AS PER OUR EXAMPLE, MAKE A MARK $\frac{3}{4}$ " FROM LAST OUTSIDE DIAMETER AS SHOWN BELOW. FOR NEXT CONDUIT, REPEAT STEPS 3,4, and 5.



STEP SIX:

(OPTIONAL) USING YOUR TEMPLATE AS A SQUARE, WITH ONE EDGE PLACED AGAINST THE REFERENCE LINE, MARK A LINE AT RIGHT ANGLES TO THE REFERENCE LINE THROUGH THE CENTER MARK OF CONDUIT. AGAIN, USING YOUR TEMPLATE AS A SQUARE, WITH ONE EDGE PLACED AGAINST CENTER LINE JUST MADE IN STEP SIX, PLACE ANOTHER LINE AT RIGHT ANGLES THROUGH THE CENTER LINE OF CONDUIT. REPEAT FOR REMAINING CONDUITS. THESE LINES REPRESENT THE CROSS HAIRS NEEDED FOR ALIGNING KNOCKOUT CUTTERS AND ARE NOT ALWAYS NECESSARY.